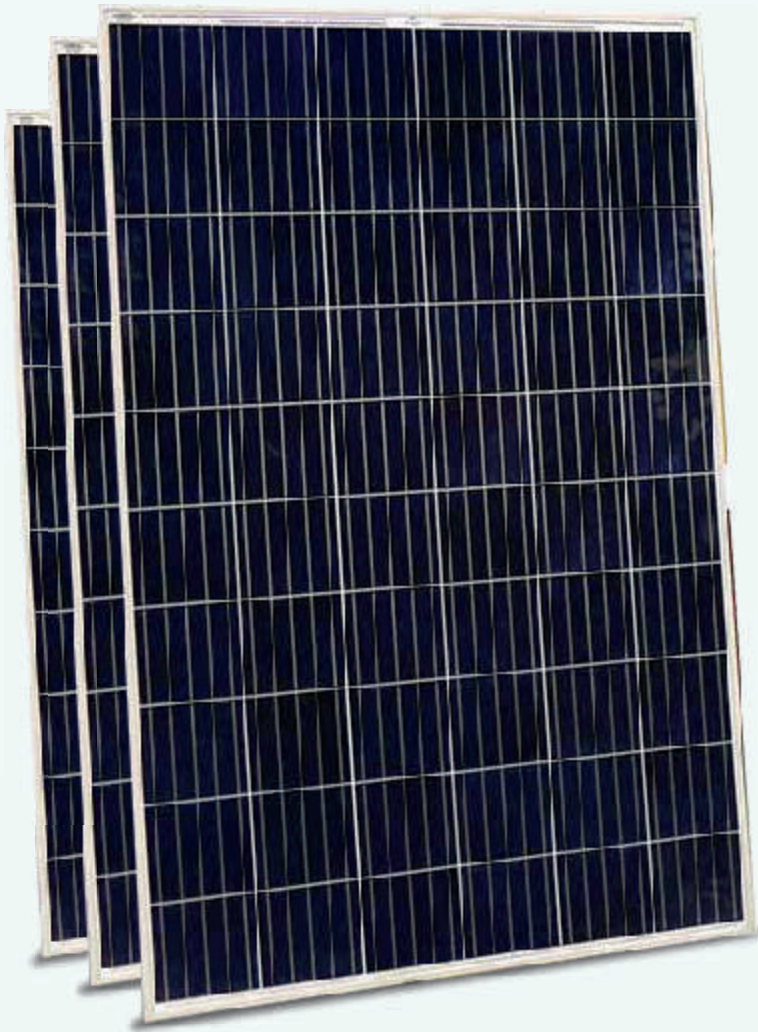


KILL YOUR BILL

SOLAR PANEL
upto 300W



Keypoints



Premium grade high efficiency 4BB/ 5BB solar cells.



Excellent low light response.



Positive power tolerance.



Long life durability

IS 16242
(Part 1): 2014



R-95000477



Technical Specifications

Wattage Wp	40	50	60	75	100	150	265	330
Voltage at max. Power ,Vmax	17.00	18.00	18.00	18.00	18.00	18.20	30.92	38.12
Open circuit Voltage ,Voc	21.00	21.00	21.00	22.00	22.00	22.20	37.95	45.15
current at max. Power ,Imax	2.36	2.78	3.33	4.17	5.56	8.30	8.58	8.39
short circuit current ,Isc	2.54	3.20	3.83	4.67	6.06	8.50	9.18	8.98
FF	0.75	0.74	0.75	0.73	0.75	0.80	0.76	0.75

Note: *STC(1000W/AM1.5/cell temperature 25°C)

Module Mechanical Details								
Module Length (mm) ±2mm	470	545	645	775	1010	1490	1645	1963
Module width (mm) ±2mm	665	665	665	665	665	665	985	985
Module efficiency (%)	13.99	13.80	13.99	14.55	14.89	15.14	16.35	16.55
Mounting hole Pitch X axis in mm ±2 mm	637	637	637	637	637	630	945	945
Mounting hole Pitch Y axis in mm ±2 mm	210	300	300	400	500	750	860/1360	1175/1400
Module weight (Aprox in kg)	3	4	5	6.5	7.75	10.6	17.5	22
Packing Type	5 in 1	5 in 1	5 in 1	5 in 1	5 in 1	4 in1	1 in 1	1 in 1

Power Tolerance -0/+3%,Electrical Parameters Tolerance ±5%



HOME UPS

SOLAR PCU

TUBULAR BATTERY

SMF BATTERY

MPPT SOLAR
POWER CONDITIONING UNIT

SOLAR
CHARGE CONTROLLER

SOLAR
KITS & ACCESSORIES

 **SMARTEN POWER SYSTEMS PVT. LTD.**

Plot No. 374, Pace City-II, Sector-37, Gurugram, Haryana- 122001, India,